

# MANITOU TRAILS

BEING A SUBDIVISION PART OF THE N.E. 1/4 OF SECTION 27, THE N.E. 1/4 OF N.W. 1/4 OF SECTION 27,  
AND PART OF S. 1/2 OF SECTION 22, T.36N, R.4E, ROGERS TWP, PRESQUE ISLE COUNTY, MICHIGAN.

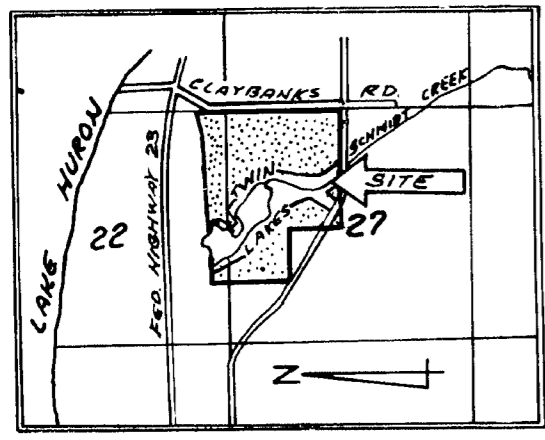
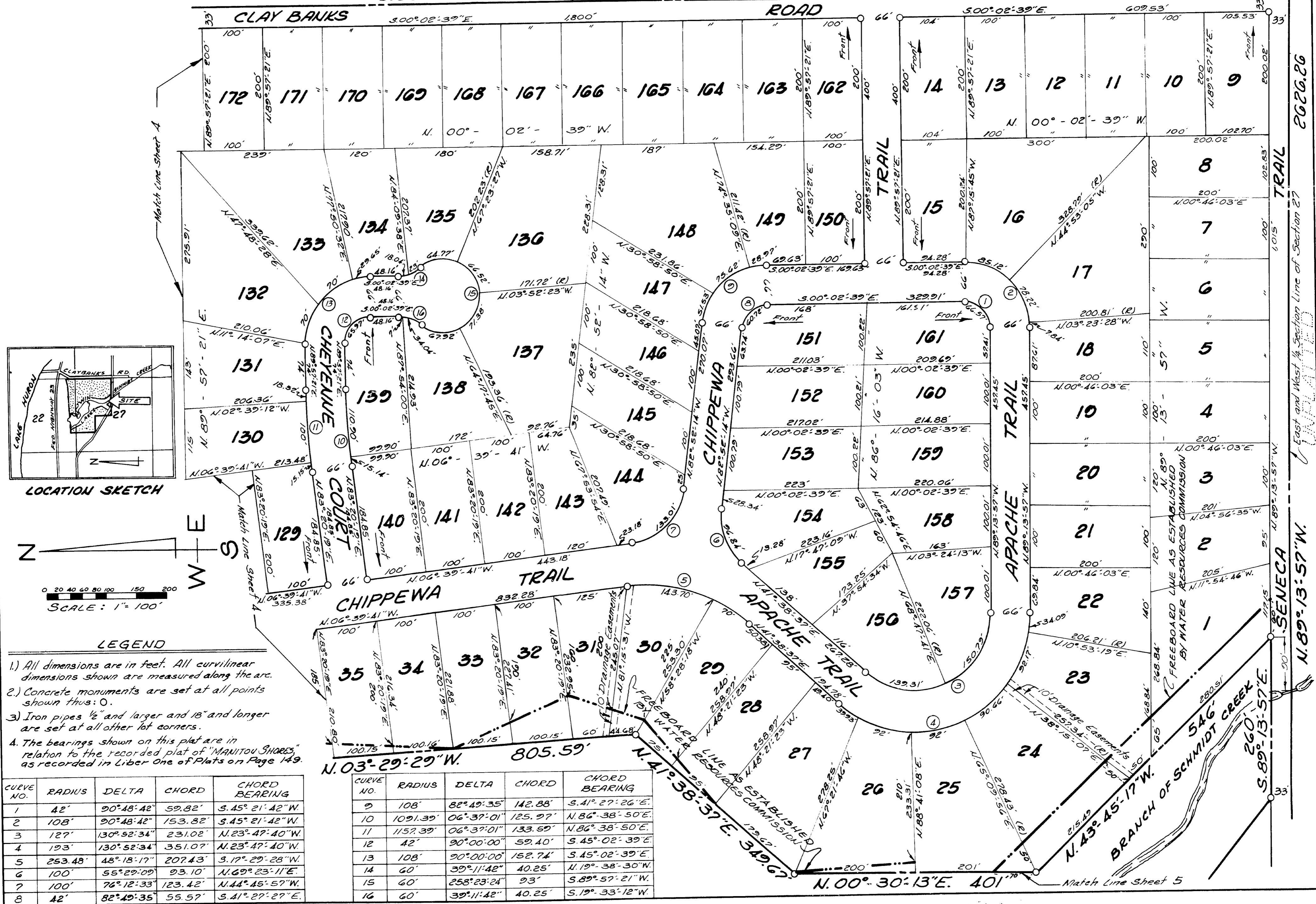
UNPLATTED

POINT OF BEGINNING - EAST  
1/4 POST SEC. 27, T.36N, R.4E.

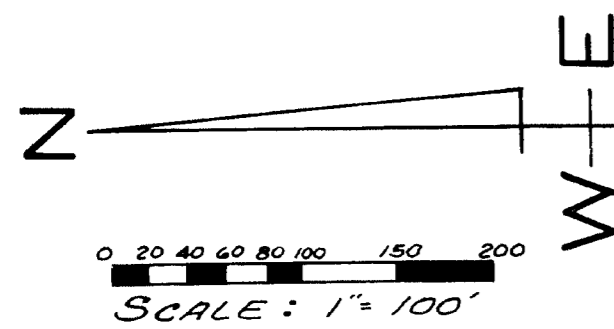
UNPLATTED S.00°-02'-39"E.

East Line Northeast 1/4, Section 27

2622.84'



LOCATION SKETCH



**LEGEND**

- 1.) All dimensions are in feet. All curvilinear dimensions shown are measured along the arc.
- 2.) Concrete monuments are set at all points shown thus: O.
- 3.) Iron pipes 1/2" and larger and 18" and longer are set at all other lot corners.
- 4.) The bearings shown on this plat are in relation to the recorded plat of "MANITOU SHORES," as recorded in Liber One of Plats on Page 149.

CURVE NO.	RADIUS	DELTA	CHORD	CHORD BEARING
1	42'	90°48'42"	59.82'	S.45°21'42"W.
2	108'	90°48'42"	153.82'	S.45°21'42"W.
3	127'	130°52'34"	231.02'	N.23°47'40"W.
4	193'	130°52'34"	351.07'	N.23°47'40"W.
5	253.48'	48°18'17"	207.43'	S.17°29'28"W.
6	100'	55°29'09"	93.10'	N.69°23'11"E.
7	100'	76°12'33"	123.42'	N.44°45'57"W.
8	42'	82°49'35"	55.57'	S.41°27'27"E.

CURVE NO.	RADIUS	DELTA	CHORD	CHORD BEARING
9	108'	82°49'35"	142.88'	S.41°27'26"E.
10	1091.39'	06°37'01"	125.97'	N.86°38'50"E.
11	1152.39'	06°37'01"	133.69'	N.86°38'50"E.
12	42'	90°00'00"	59.40'	S.45°02'39"E.
13	108'	90°00'00"	152.74'	S.45°02'39"E.
14	60'	39°11'42"	40.25'	N.19°38'30"W.
15	60'	258°23'24"	93'	S.89°57'21"W.
16	60'	39°11'42"	40.25'	S.19°33'12"W.