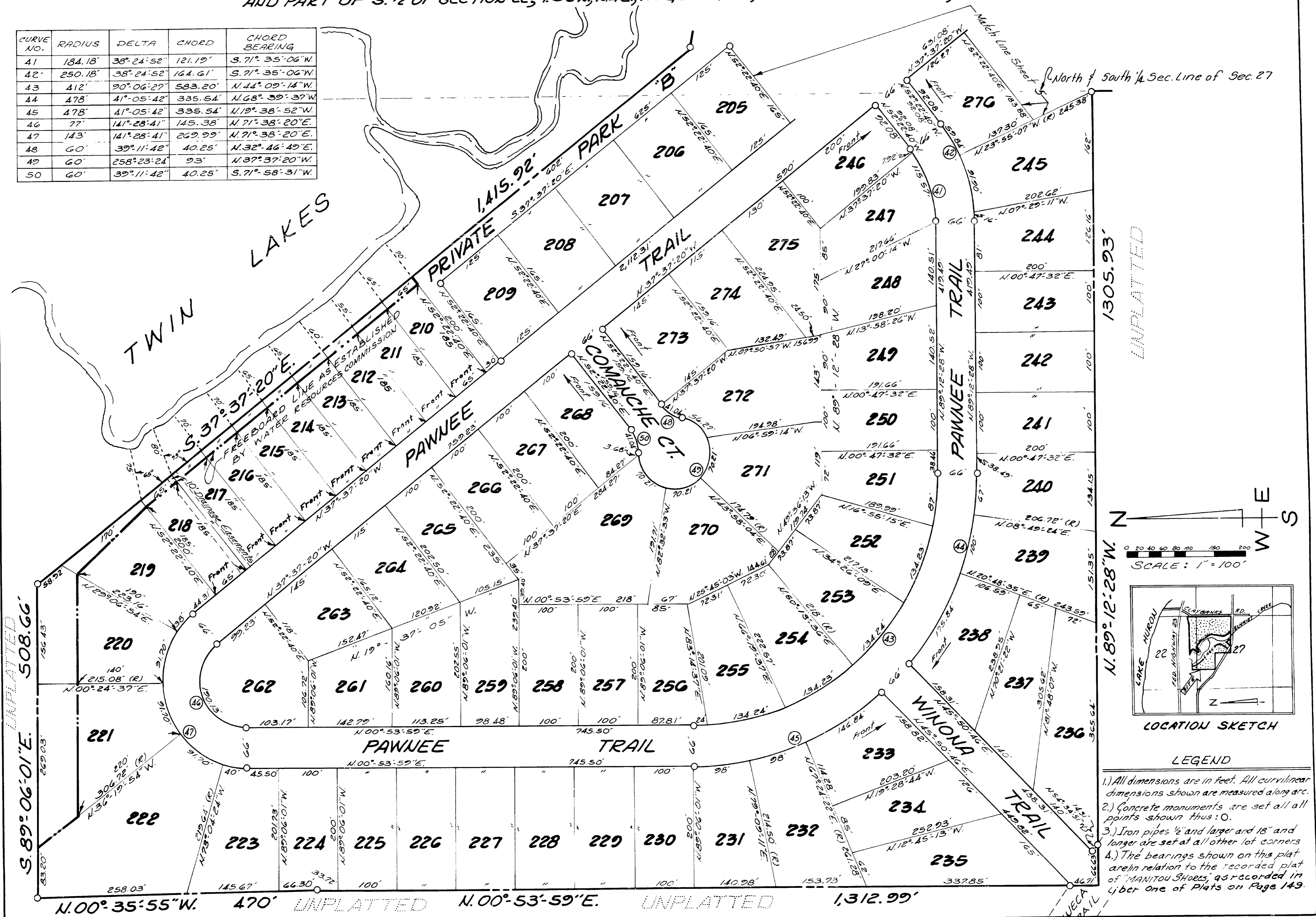


# MANITOU TRAILS

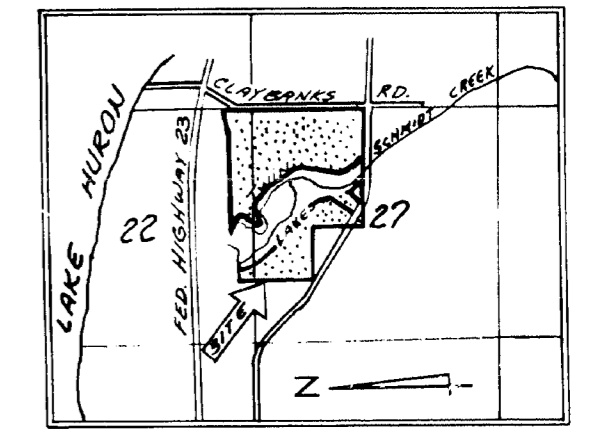
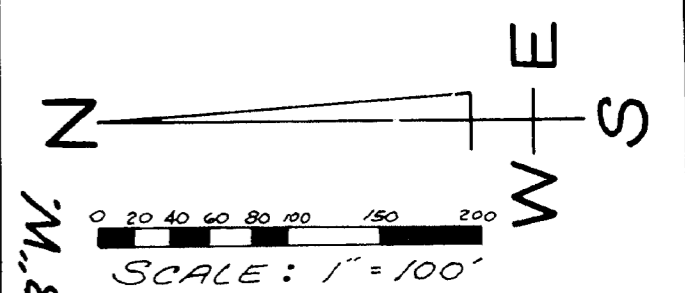
BEING A SUBDIVISION PART OF THE N.E. 1/4 OF SECTION 27, THE N.E. 1/4 OF N.W. 1/4 OF SECTION 27, AND PART OF S. 1/2 OF SECTION 22, T.36N, R.4E, ROGERS TWP, PRESQUE ISLE COUNTY, MICHIGAN.

CURVE NO.	RADIUS	DELTA	CHORD	CHORD BEARING
41	184.18'	38° 24' 52"	121.19'	S. 71° 35' 06" W
42	250.18'	38° 24' 52"	164.61'	S. 71° 35' 06" W
43	412'	90° 06' 27"	583.20'	N. 44° 09' 14" W
44	478'	41° 05' 42"	335.54'	N. 68° 39' 37" W
45	478'	41° 05' 42"	335.54'	N. 19° 38' 52" W
46	77'	141° 28' 41"	145.38'	N. 71° 38' 20" E
47	143'	141° 28' 41"	269.99'	N. 71° 38' 20" E
48	60'	39° 11' 42"	40.25'	N. 32° 46' 49" E
49	60'	258° 23' 24"	93'	N. 37° 37' 20" W
50	60'	39° 11' 42"	40.25'	S. 71° 58' 31" W



Match Line Sheet North South 1/4 Sec. Line of Sec. 27

UNPLATTED



LOCATION SKETCH

LEGEND

- 1.) All dimensions are in feet. All curvilinear dimensions shown are measured along arc.
- 2.) Concrete monuments are set at all points shown thus: O.
- 3.) Iron pipes 1/2" and larger and 18" and longer are set at all other lot corners.
- 4.) The bearings shown on this plat are in relation to the recorded plat of "MANITOU SHOES", as recorded in Liber One of Plats on Page 149.

UNPLATTED S. 89° 06' 01" E. 508.66'

N. 89° 12' 28" W. 1305.93'

UNPLATTED N. 00° 53' 59" E. 1,312.99'

0.800